

## Section 9

# RIGHT-HAND DRIVE CARS FROM SERIAL NUMBER 9000

APPLICATION	SHEET No.
Engine Compartment Looms	1
Interior Looms	2
Left-hand and Right-hand Body Looms, Console and Door Looms	3
Fuseboard and Sockets	4

Printed in England

April 1971

T.S.D. 2476

PRACTICAL WIRING DIAGRAMS

**Sheet 1**  
**Engine Compartment Looms**

for  
Rolls-Royce Silver Shadow  
and  
Bentley T Series

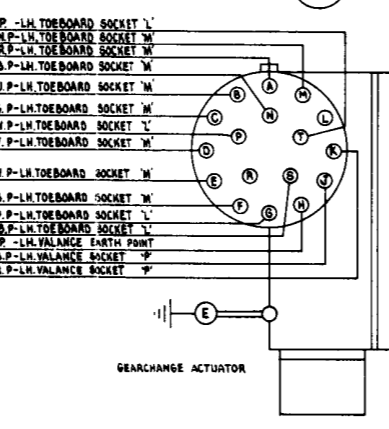
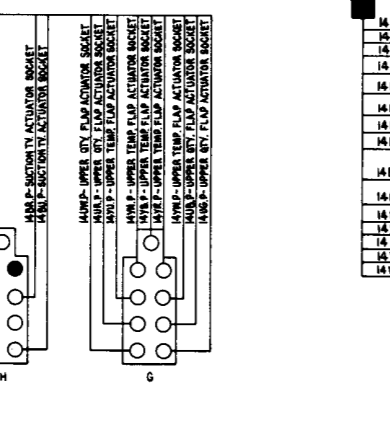
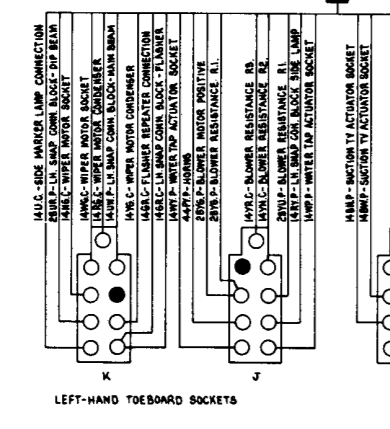
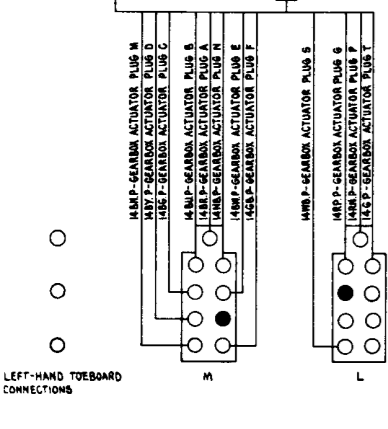
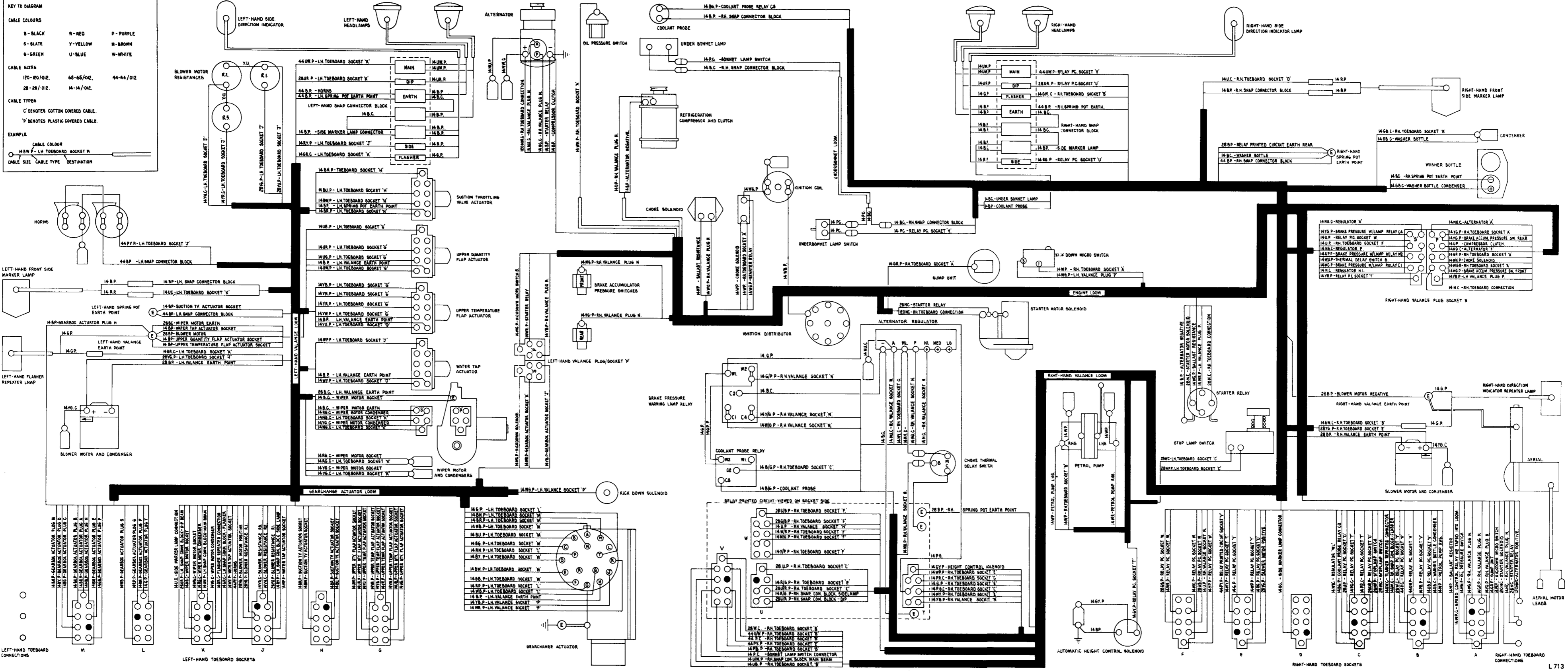
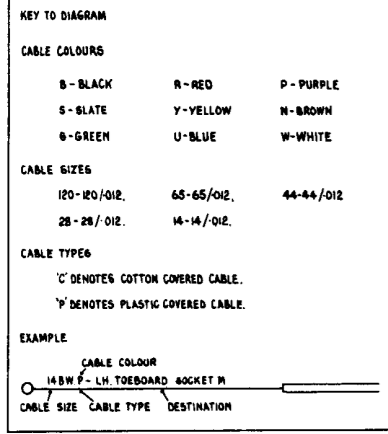
**RIGHT-HAND DRIVE CARS FROM  
SERIAL NUMBER 9000**

T. S. D. Publications 2723

© Rolls-Royce Limited 1970.

"This document is the property of Rolls-Royce Limited and may not be copied or communicated to a third party or used for any purpose other than that for which it is supplied without the express written authority of Rolls-Royce Limited."

"Whilst the information in this document given in good faith based upon the latest knowledge available to Rolls-Royce Limited, Rolls-Royce Limited gives no warranty or representation concerning such information, and such information must not be taken as establishing any contractual or other commitment on the part of Rolls-Royce Limited."



PRACTICAL WIRING DIAGRAMS

**Sheet 2**  
**Interior Looms**

for  
Rolls-Royce Silver Shadow  
and  
Bentley T Series

**RIGHT-HAND DRIVE CARS FROM  
SERIAL NUMBER 9000**

T. S. D. Publications 2723

© Rolls-Royce Limited 1970.

"This document is the property of Rolls-Royce Limited and may not be copied or communicated to a third party or used for any purpose other than that for which it is supplied without the express written authority of Rolls-Royce Limited."

"Whilst the information in this document given in good faith based upon the latest knowledge available to Rolls-Royce Limited, Rolls-Royce Limited gives no warranty or representation concerning such information, and such information must not be taken as establishing any contractual or other commitment on the part of Rolls-Royce Limited."



PRACTICAL WIRING DIAGRAMS

**Sheet 3**  
**Left-hand and Right-hand Body Looms**  
**Console and Door Looms**

for  
Rolls-Royce Silver Shadow  
and  
Bentley T Series

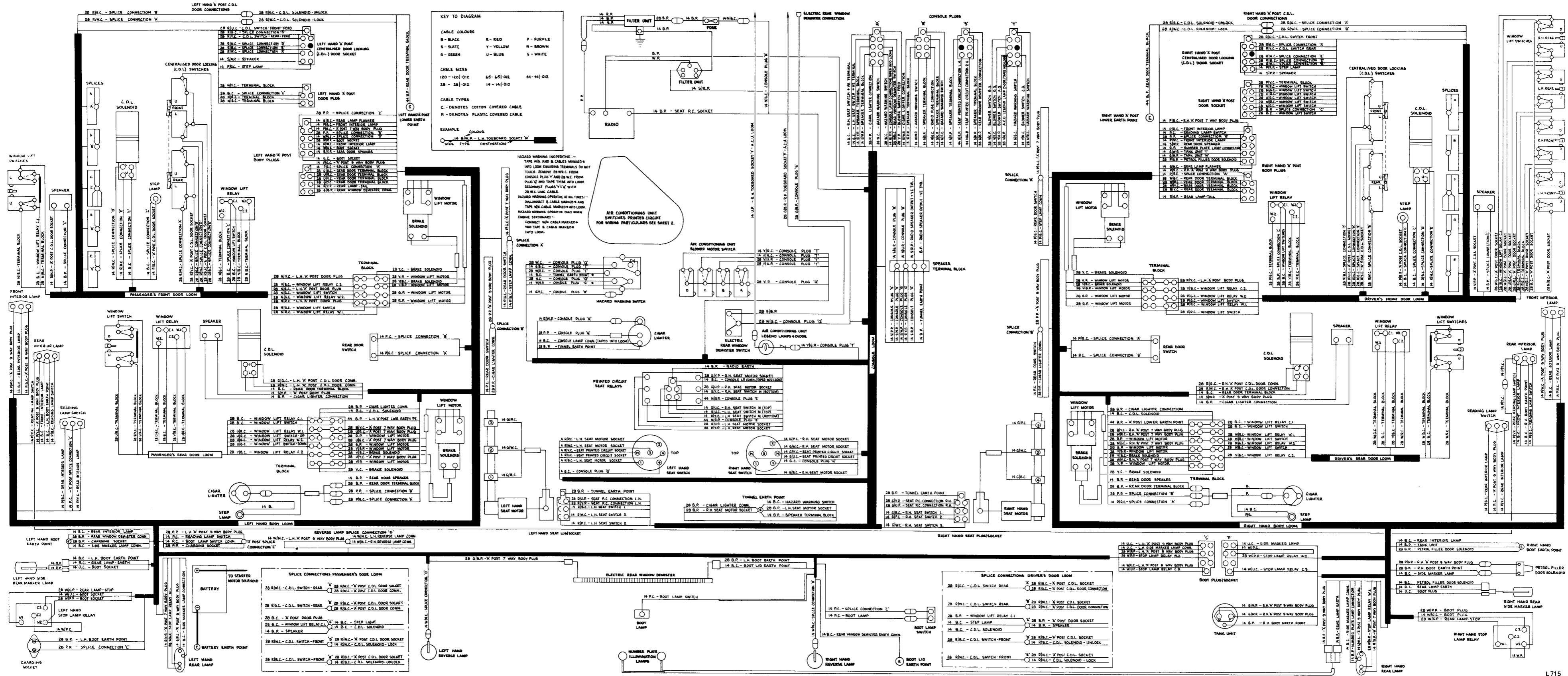
**RIGHT-HAND DRIVE CARS FROM**  
**SERIAL NUMBER 9000**

T. S. D. Publications 2723

© Rolls-Royce Limited 1970.

"This document is the property of Rolls-Royce Limited and may not be copied or communicated to a third party or used for any purpose other than that for which it is supplied without the express written authority of Rolls-Royce Limited."

"Whilst the information in this document given in good faith based upon the latest knowledge available to Rolls-Royce Limited, Rolls-Royce Limited gives no warranty or representation concerning such information, and such information must not be taken as establishing any contractual or other commitment on the part of Rolls-Royce Limited."



PRACTICAL WIRING DIAGRAMS

**Sheet 4**  
**Fuseboard and Sockets**

for  
Rolls-Royce Silver Shadow  
and  
Bentley T Series

**RIGHT-HAND DRIVE CARS FROM  
SERIAL NUMBER 9000**

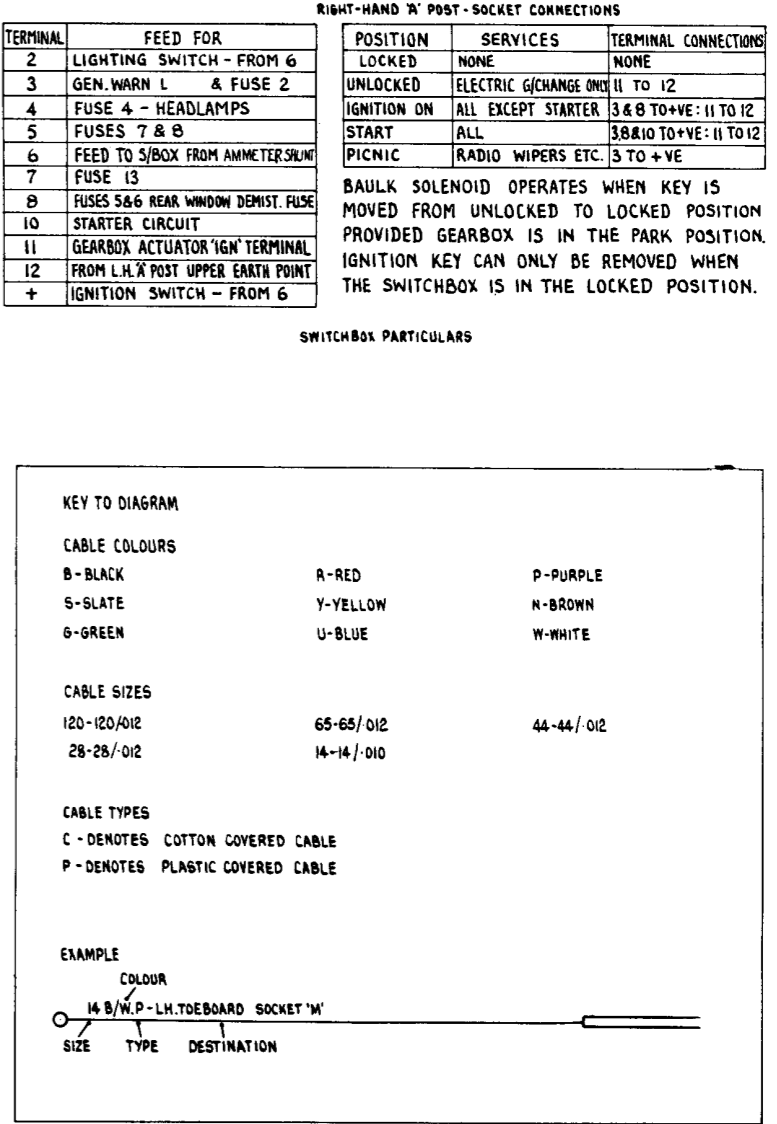
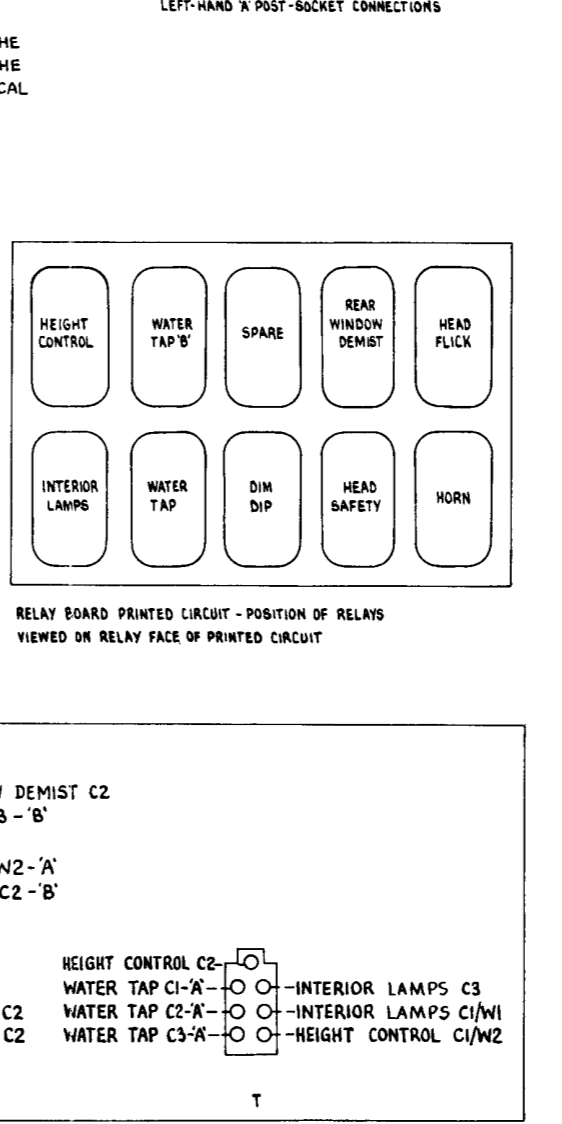
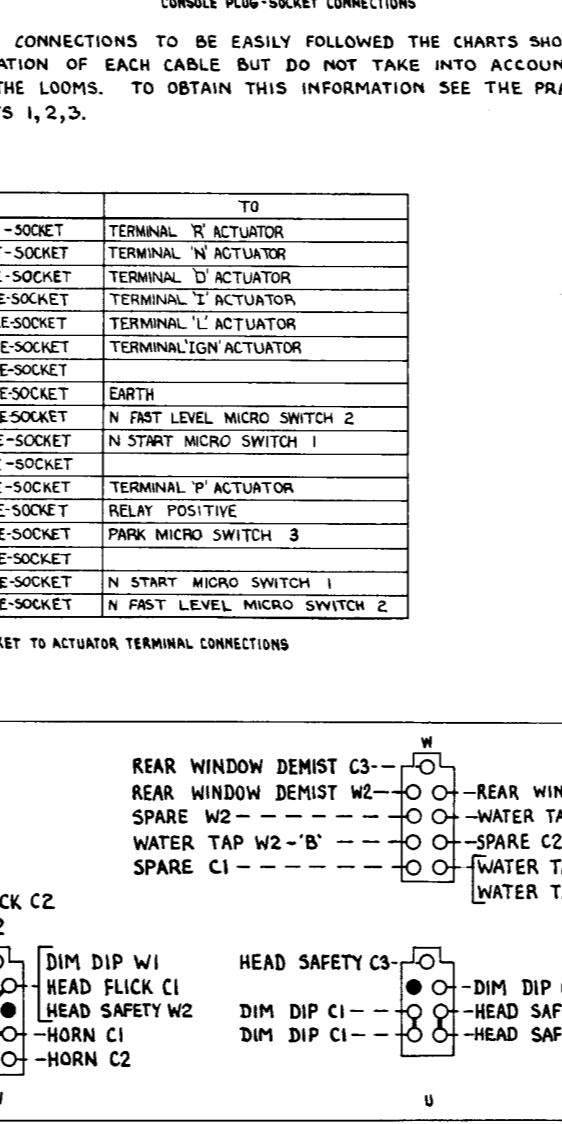
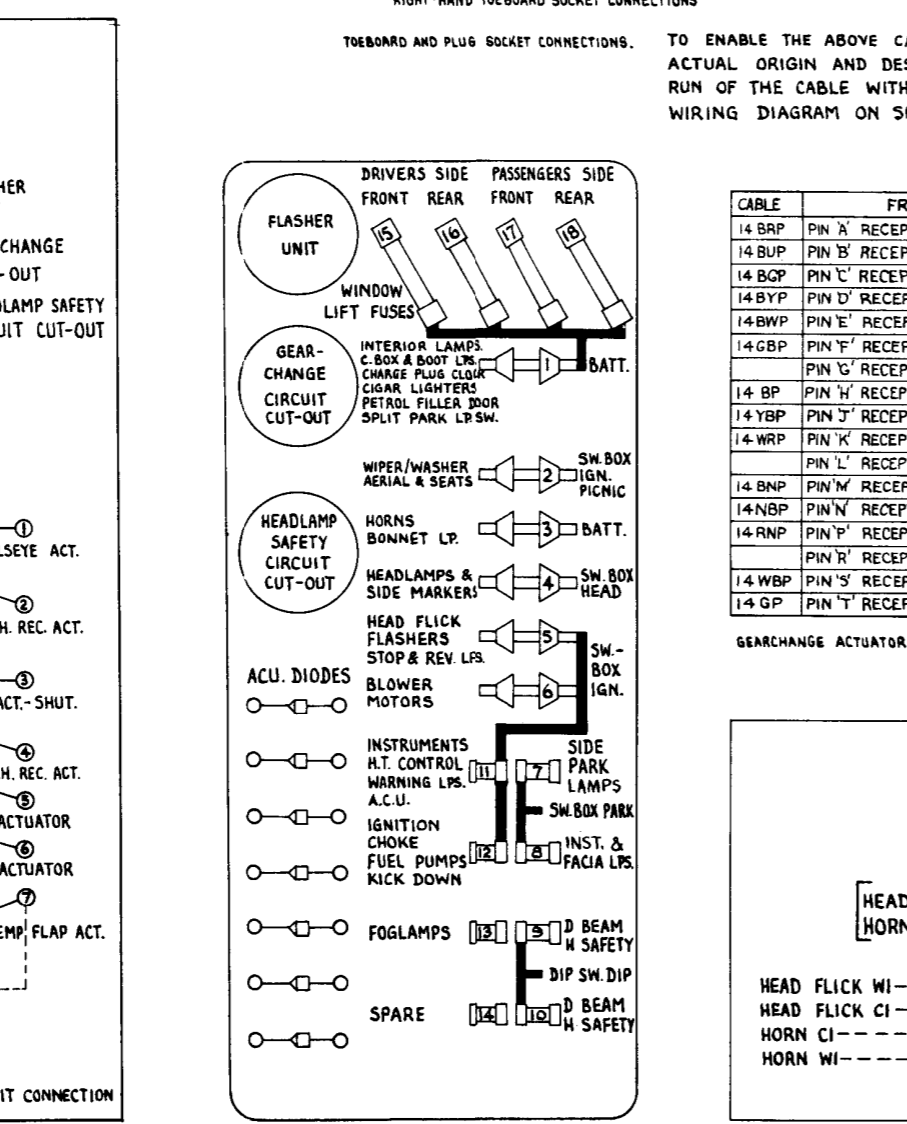
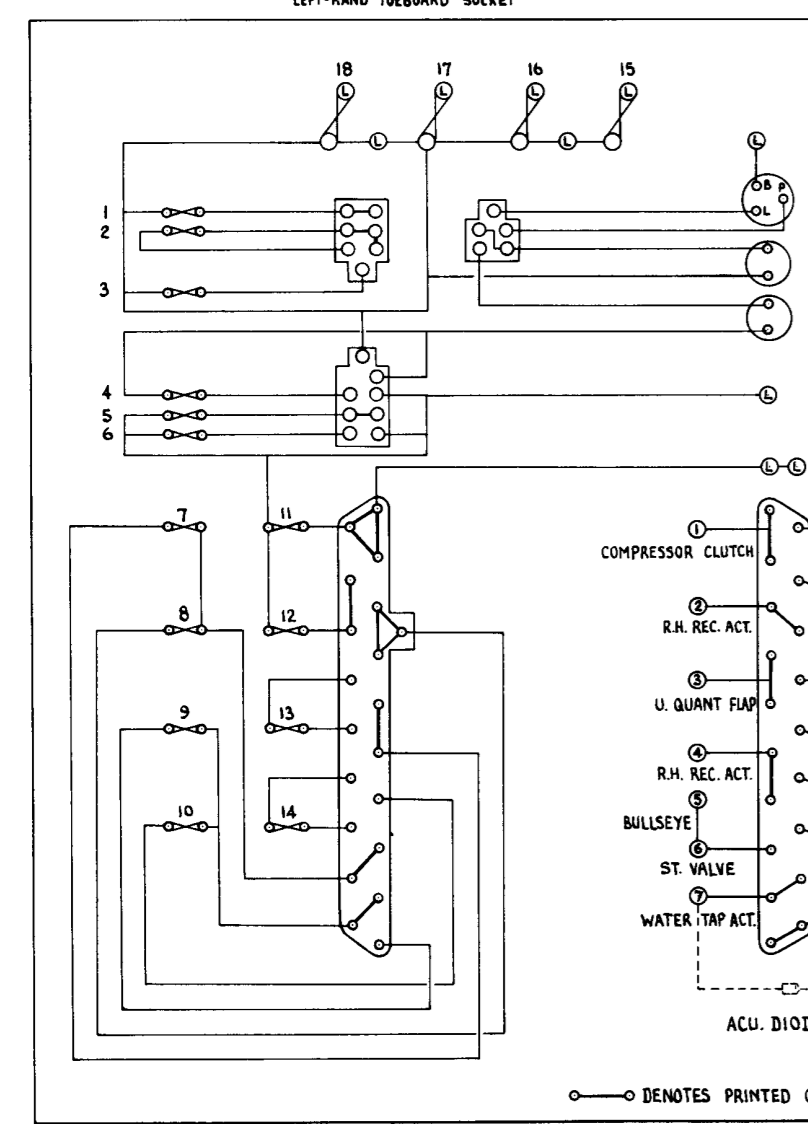
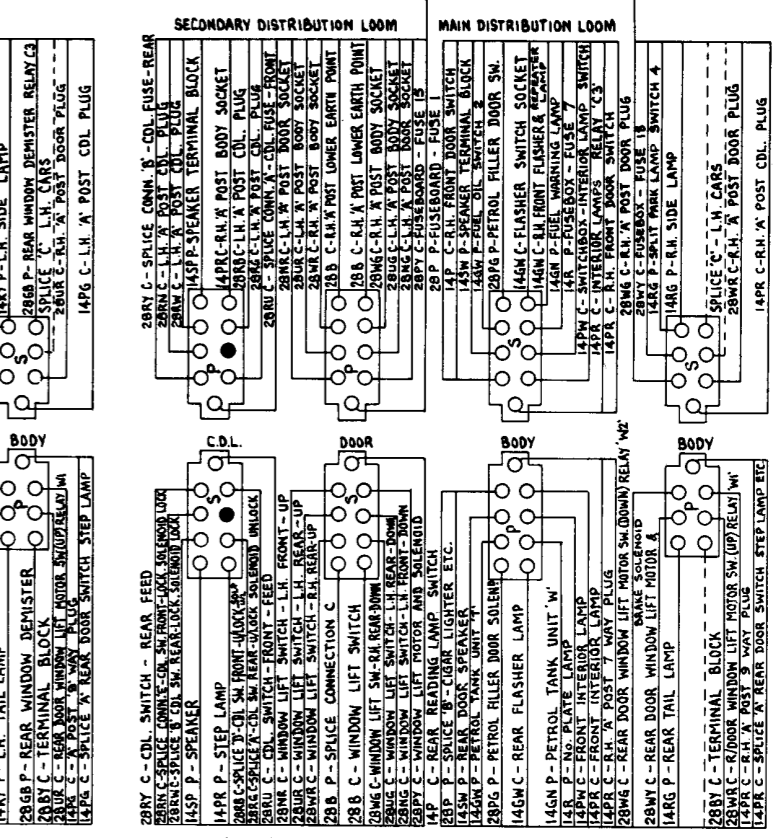
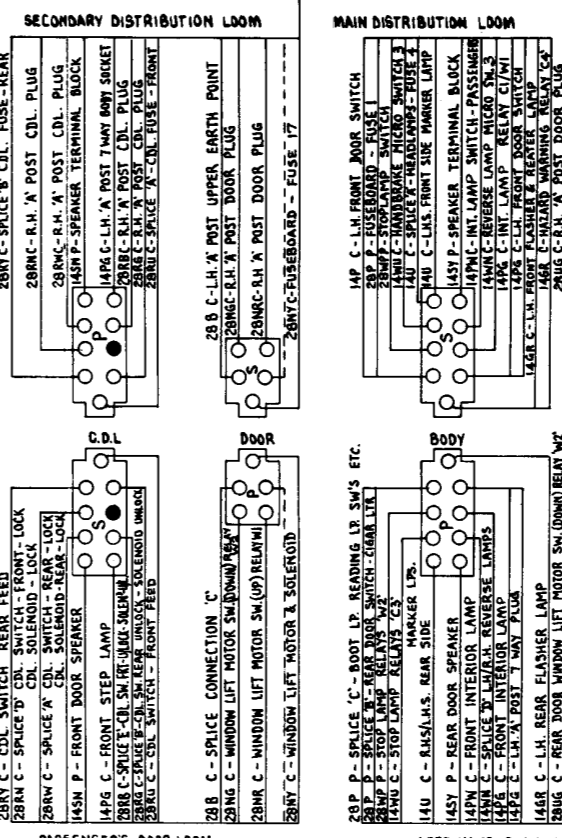
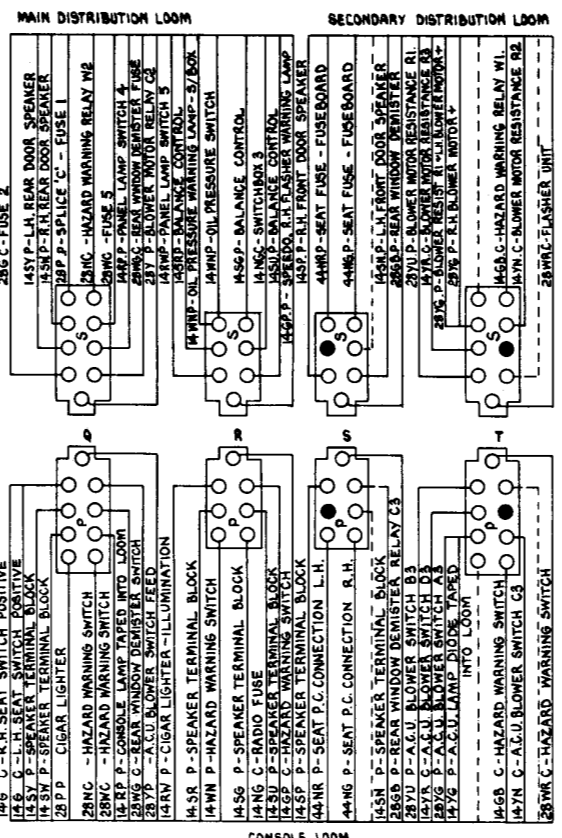
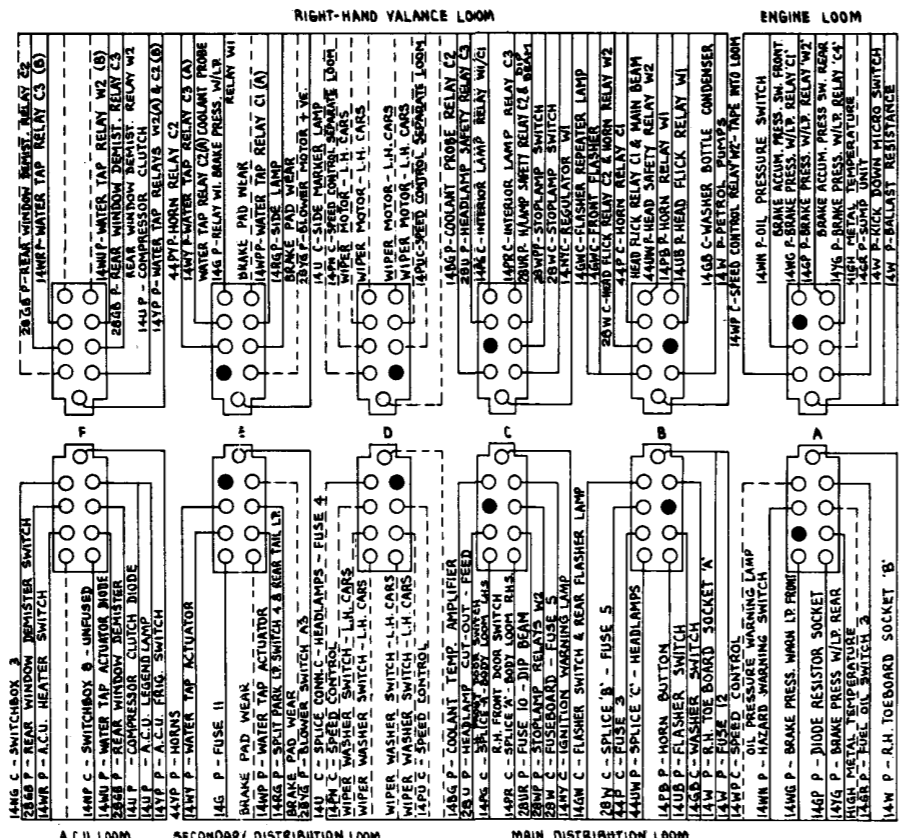
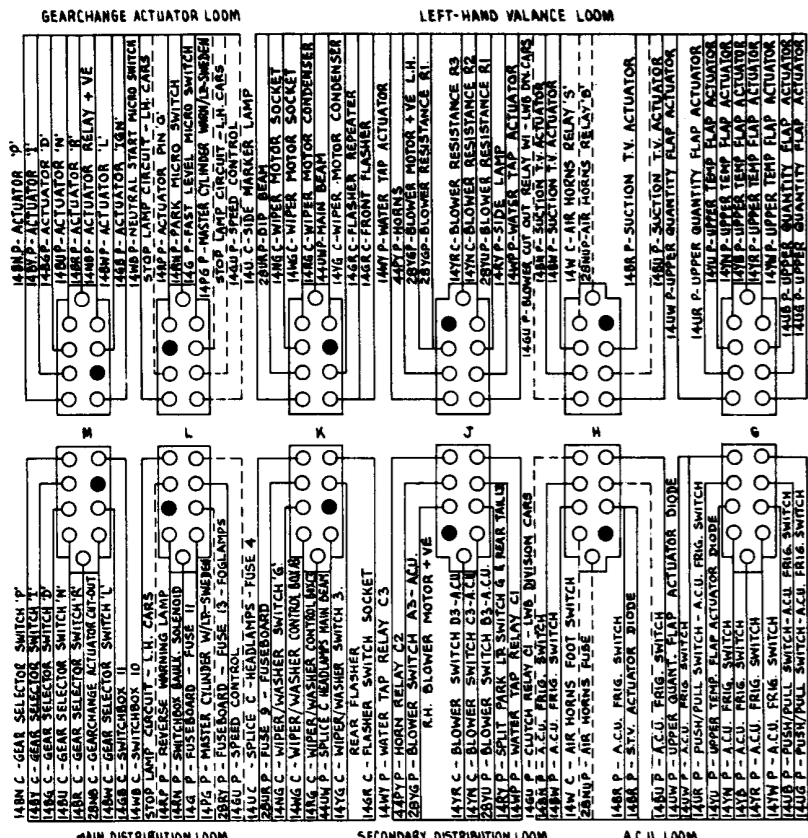
T. S. D. Publications 2723

© Rolls-Royce Limited 1970.

"This document is the property of Rolls-Royce Limited and may not be copied or communicated to a third party or used for any purpose other than that for which it is supplied without the express written authority of Rolls-Royce Limited."

"Whilst the information in this document given in good faith based upon the latest knowledge available to Rolls-Royce Limited, Rolls-Royce Limited gives no warranty or representation concerning such information, and such information must not be taken as establishing any contractual or other commitment on the part of Rolls-Royce Limited."





FUSEBOARD PRINTED CIRCUIT - SOCKET AND FUSE CONNECTIONS - VIEWED ON SOCKET FACE OF PRINTED CIRCUIT

TOEBOARD AND PLUG SOCKET CONNECTIONS. TO ENABLE THE ABOVE CABLE CONNECTIONS TO BE EASILY FOLLOWED THE CHARTS SHOW THE ACTUAL ORIGIN AND DESTINATION OF EACH CABLE BUT DO NOT TAKE INTO ACCOUNT THE RUN OF THE CABLE WITHIN THE LOOMS. TO OBTAIN THIS INFORMATION SEE THE PRACTICAL WIRING DIAGRAM ON SHEETS 1, 2, 3.

CONSOLE PLUG-SOCKET CONNECTIONS

LEFT-HAND 'A' POST-SOCKET CONNECTIONS

RIGHT-HAND 'A' POST-SOCKET CONNECTIONS

○ DENOTES PRINTED CIRCUIT CONNECTION

SW. BOX IGN. SW. BOX PARK

REAR WINDOW DEMIST C3 - REAR WINDOW DEMIST C2  
 SPARE W2 - WATER TAP C3 - 'B'  
 WATER TAP W2 - 'B' - SPARE C2  
 SPARE C1 - WATER TAP W2 - 'A'  
 WATER TAP C2 - 'B'

RELAY BOARD PRINTED CIRCUIT - POSITION OF RELAYS VIEWED ON RELAY FACE OF PRINTED CIRCUIT

KEY TO DIAGRAM  
 CABLE COLOURS  
 B-BLACK A-RED P-PURPLE  
 S-SLATE Y-YELLOW N-BROWN  
 G-GREEN U-BLUE W-WHITE